

**Anti-Adenosine A2b Receptor Antibody**  
**Catalog # AP53841****Specification**

---

**Anti-Adenosine A2b Receptor Antibody - Product Information**

Application	WB, IF, IHC
Primary Accession	<a href="#">P29275</a>
Reactivity	Human, Mouse, Rat
Host	Rabbit
Clonality	Polyclonal
Calculated MW	36333

**Anti-Adenosine A2b Receptor Antibody - Additional Information****Gene ID** 136**Other Names**

Adenosine receptor A2b

**Target/Specificity**

Recognizes endogenous levels of Adenosine A2b Receptor protein.

**Dilution**

WB~~1/500 - 1/1000

IF~~1/50 - 1/200

IHC~~1:100~500

**Format**

Liquid in 0.42% Potassium phosphate, 0.87% Sodium chloride, pH 7.3, 30% glycerol, and 0.09% (W/V) sodium azide.

**Storage**

Store at -20 °C.Stable for 12 months from date of receipt

**Anti-Adenosine A2b Receptor Antibody - Protein Information****Name** ADORA2B**Function**

Receptor for adenosine. The activity of this receptor is mediated by G proteins which activate adenylyl cyclase.

**Cellular Location**

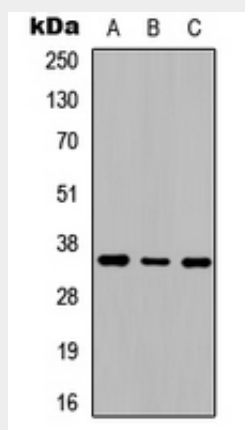
Cell membrane; Multi-pass membrane protein.

**Anti-Adenosine A2b Receptor Antibody - Protocols**

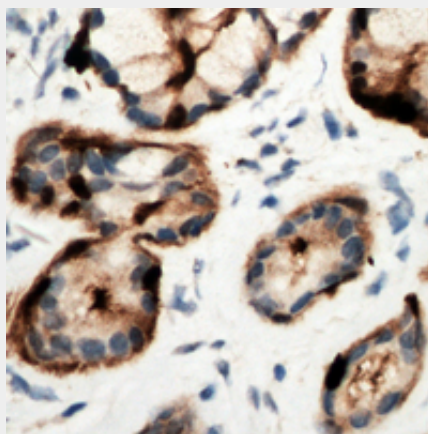
Provided below are standard protocols that you may find useful for product applications.

- [Western Blot](#)
- [Blocking Peptides](#)
- [Dot Blot](#)
- [Immunohistochemistry](#)
- [Immunofluorescence](#)
- [Immunoprecipitation](#)
- [Flow Cytometry](#)
- [Cell Culture](#)

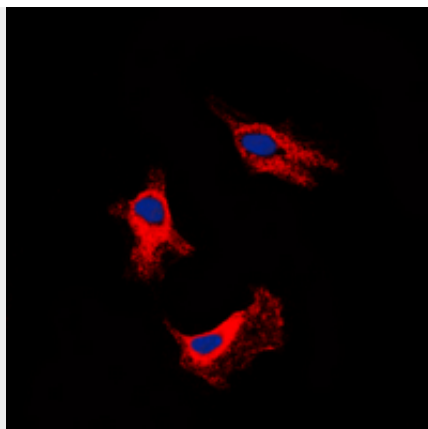
#### Anti-Adenosine A2b Receptor Antibody - Images



Western blot analysis of Adenosine A2b Receptor expression in SHSY5Y (A), NIH3T3 (B), rat kidney (C) whole cell lysates.



Immunohistochemical analysis of Adenosine A2b Receptor staining in human pancreas formalin fixed paraffin embedded tissue section. The section was pre-treated using heat mediated antigen retrieval with sodium citrate buffer (pH 6.0). The section was then incubated with the antibody at room temperature and detected using an HRP conjugated compact polymer system. DAB was used as the chromogen. The section was then counterstained with haematoxylin and mounted with DPX.



Immunofluorescent analysis of Adenosine A2b Receptor staining in SHSY5Y cells. Formalin-fixed cells were permeabilized with 0.1% Triton X-100 in TBS for 5-10 minutes and blocked with 3% BSA-PBS for 30 minutes at room temperature. Cells were probed with the primary antibody in 3% BSA-PBS and incubated overnight at 4 °C in a humidified chamber. Cells were washed with PBST and incubated with a DyLight 594-conjugated secondary antibody (red) in PBS at room temperature in the dark. DAPI was used to stain the cell nuclei (blue).

#### **Anti-Adenosine A2b Receptor Antibody - Background**

Rabbit polyclonal antibody to Adenosine A2b Receptor